

# Traveling Between Kirkjubøur and Tórshavn by Bus

Last updated on 24. June, 2026

In Kirkjubøur you can visit historical St. Olaf's Church, the enigmatic Magnus Cathedral, and the Kirkjubøgarður estate farmhouse, also known as Roystovan. These are all part of Kirkjubøur's heritage site.

**Admission & Payment:** Entry to the heritage site is **150 DKK**. Payment is collected at the site entrance next to the bus stop.



**To Kirkjubøur:** Take one of the red busses from *Steinatún Norður (Steinatún N.)*, which is opposite from Visit Tórshavn.

## Monday to Friday (Bus 5)

Dep. from Steinatún N.	Arr. at Kirkjubø
07:35	08:01
08:21 **	08:53
11:17	11:43
14:52	15:18
15:35	16:01
16:21 **	16:49
18:09	18:35
20:20	20:46
22:20	22:46

## Saturday (Bus 7)

Dep. from Steinatún	Arr. at Kirkjubø
10:54	11:20
14:54	15:20
18:54	19:20

**\*\*Change bus in *Norðasta Horn*** from bus 2 to bus 5 to reach Kirkjubøur.

**Back to Tórshavn (Steinatún S.):** Take one of the red busses from *Kirkjubøur Terminal*, which is a black outbuilding near St. Olaf's Church in Kirkjubøur.

## Monday to Friday (Bus 5)

Dep. from Kirkjubøur	Arr. in Steinatún S.
07:05 **	07:36
08:15 **	08:56
09:46	10:10
13:25	13:50
15:25	15:50
16:05 **	16:36
19:00	19:26
21:00	21:26

## Saturday (Bus 7)

Dep. from Kirkjubøur	Arr. in Tórshavn
11:35	12:01
15:35	16:01
19:35	20:01

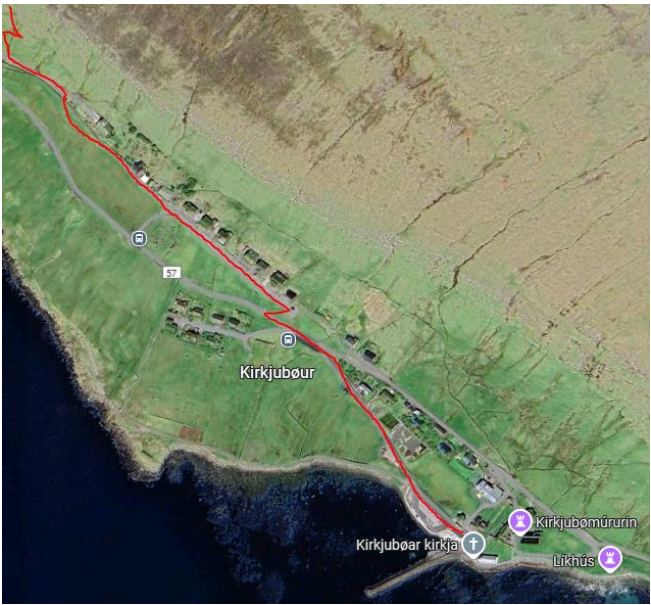
**\*\*Change bus in *Norðasta Horn*** from bus 5 to bus 2 to reach central Tórshavn.

# Tórshavn–Kirkjubøur Hiking Trail

From/to Tórshavn:



From/to Kirkjubøur:



See more information about the hiking tour on: [www.visitfaroeislands.com/hiking](http://www.visitfaroeislands.com/hiking)